

# ISYS-Interactive Systems

## CASIO IT9000 Commissioning

### Contents

1. Introduction .....	2
2. Useful Tips.....	2
1. Resetting the Unit .....	2
2. Factory Reset the Unit .....	2
3. Adjusting the Brightness .....	2
4. Configuring the Screen Tap Position.....	2
5. Displaying the Keyboard .....	3
3. Commissioning and Adding Wireless Network Configuration.....	4
4. Set Timezone and Datetime.....	13
5. Removing a 'Microsoft' Wireless Manager Configuration.....	16
6. SD Card Over The Air Updater Setup .....	18

### Document Status

Date	Version / Status	Author	Reviewer(s)
04/01/2015	1.0 DRAFT	James Kitching	

Note the word bug

When I print the document formatting on section 1 is changed from :

## 1. Introduction

This guide describes how ISYS Interactive Systems are advised to use CASIO IT9000 devices as part of a delivered solution such as WeighsoftLive (the handheld software add on to Weighsoft).

This guide is intended to supplement and summarise the CASIO IT9000 user guide. The “Useful Tips” section of this guide is intended to summarise the particularly useful information to be found in the CASIO IT9000 user guide.

## 2. Useful Tips

### 1. Resetting the Unit

Use the stylus to press the reset switch on the back of unit. This causes the unit to restart. This can be useful if the unit has stopped working for some reason. Doing a reset is likely to lose any data that you are currently editing but have not as yet saved.

### 2. Factory Reset the Unit

Performing a factory reset deletes all data (except data on the Flash disk) and resets various settings to their defaults.

Perform a factory reset whenever the following conditions occur:

If you want to delete the installed programs and reset the unit to its initial condition.

When you cannot use the terminal for whatever reason such as a memory or disk read write problem.

See the IT9000 manual for more details section E48

### 3. Adjusting the Brightness

See page E31 of the CASIO user manual.

### 4. Configuring the Screen Tap Position

See page E30 of the CASIO user manual.

## **5. Displaying the Keyboard**

The display of an onscreen keyboard can be toggled off and on by pressing the Fn key then the 0 key. Once the keyboard is displayed it can be hidden by tapping on the keyboard icon which appears at the bottom of the screen.

### 3. Commissioning and Adding Wireless Network Configuration

Put your newly activated sim in the right hand sim socket. Note SIM card activation can take twenty four hours so you may not be able to use SIM card connectivity straight away. The sim cards go I the battery compartment at the rear behind a panel that you need to remove with a screw driver.

Put the battery in.

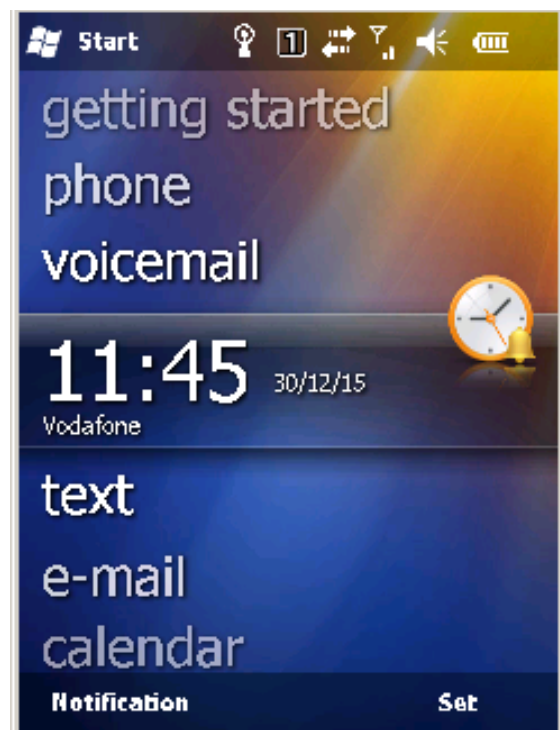
Put the handstrap in position. This goes on the back of the unit from top to bottom.

Clip the neckstrap on. Attach at the bottom of the IT9000.

Put the unit into a charger and the unit should turn on. Or you could use a cable by lifting the right hand flap using a screw driver.

Once booted up, there may well be a couple of notifications to dismiss. These can include text messages or connecting to the internet popups.

Click the Start Button on the top right hand side:



Select Settings by tapping on the settings icon that looks like a cog wheel:



Click on system:




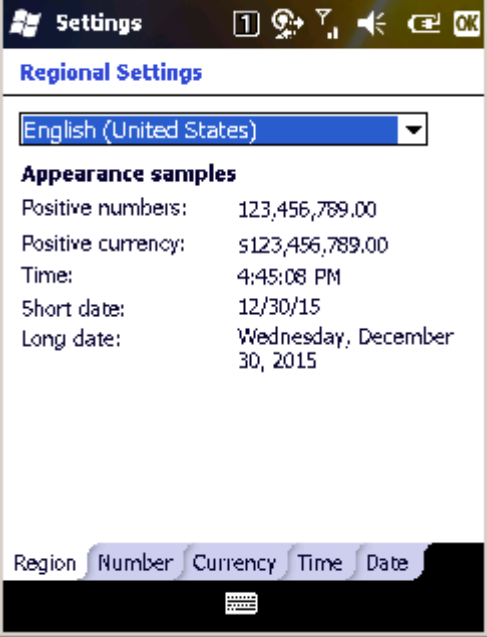

Scroll down the displayed screen until you find the regional settings icon



**Note that there is a technique required to scroll down on Windows Mobile / Windows CE.** Place your stylus on a black area on the bottom left and drag your stylus across the screen whilst it is still in contact with the screen to the top right. This technique ensure that you scroll down the screen rather than accidently run start an application by tapping on an icon.

: The regional settings screen is a picture of the earth with a clock on it in on the lower left.

Click on the regional settings icon.

	
	<p>Scroll down to find Regional Settings. Select English (United Kingdom) by scrolling up.</p> 
<p>Click OK and then OK in the top right.</p>	<p>You will be advised that you will need to reset your machine to get the regional settings applied to your unit:</p>

	<p>Click ok. Do not bother restarting the device as you will need to do this anyway after configuring the wireless network.</p>
--	---

	<p>After adjusting the regional settings and clicking ok you will have returned to the System screen.</p> <p>To now configure a wifi connection to get back up to the Settings screen you will need to press ok.</p> <p>Alternatively the settings screen can be accessed from the start screen by clicking Start then Settings:</p>
--	--

--	--

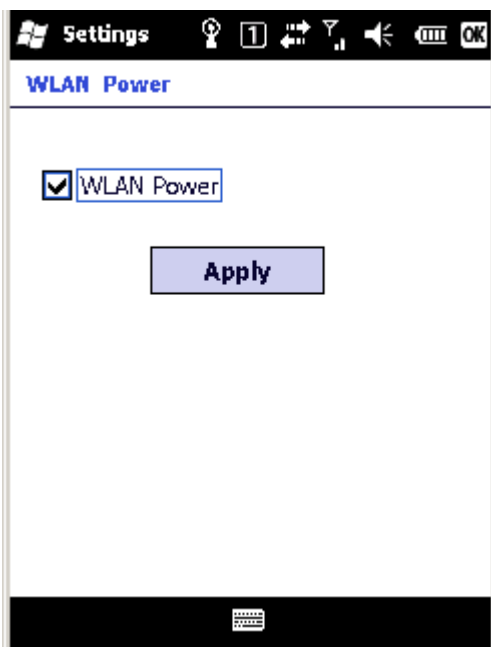
Once on the settings screen click on Connections:



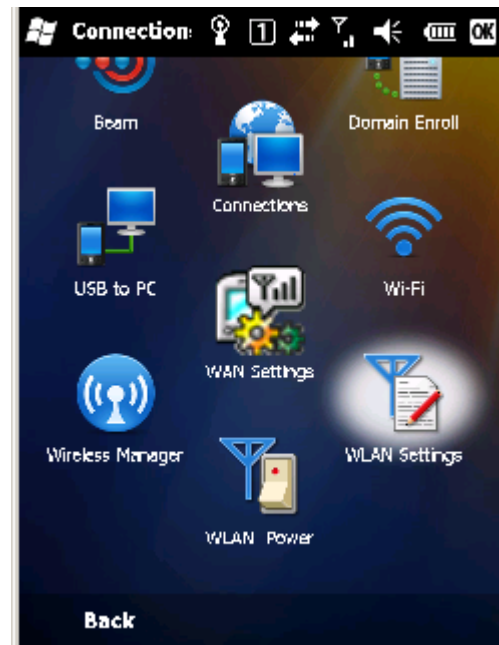
Click WLAN Power:



Tick the WLAN Power option and click Apply then OK at the top right:



Now click the WLAN Settings option:



**IMPORTANT**

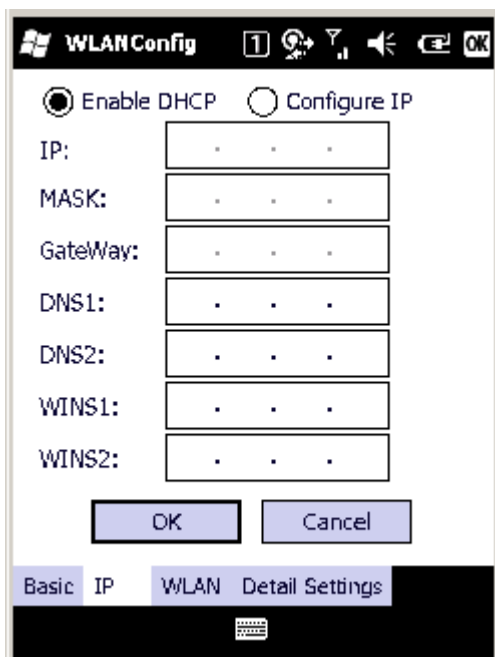
You will probably get offered a wifi network to connect to dismiss this pop up as it would display the Microsoft network configuration screen and we want to use the CASIO screen.

This “WLAN Settings” icon will load the CASIO network configuration screen. This screen replaces the Microsoft one accessed via the “Wireless Manager” icon that is also on this screen. The Microsoft screen has a tendency to forget the information that you entered into it whereas the CASIO one does not have this problem.

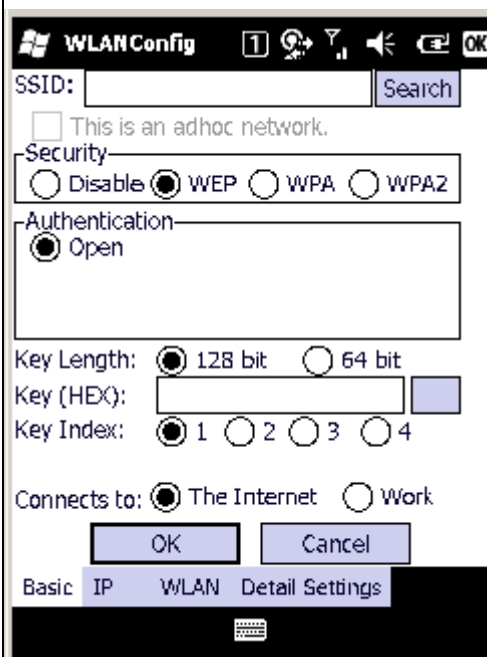
Sometimes the WLAN settings option will error or fail to respond. This happens when the Microsoft network settings option “Wireless Manager” has been used. To fix this problem you need to remove the microsoft settings created by the microsoft screen, turn off (untick) the WLAN power and reset the unit (See section 2 Useful Tips). For further detail on how to remove a microsoft wireless configuration see the laster section “

Removing a ‘Microsoft’ Wireless Manager Configuration”.

The WLAN Setting icon loads the DHCP / IP configuration screen. Tap on the first tab at the bottom of this screen where it says “Basic”:



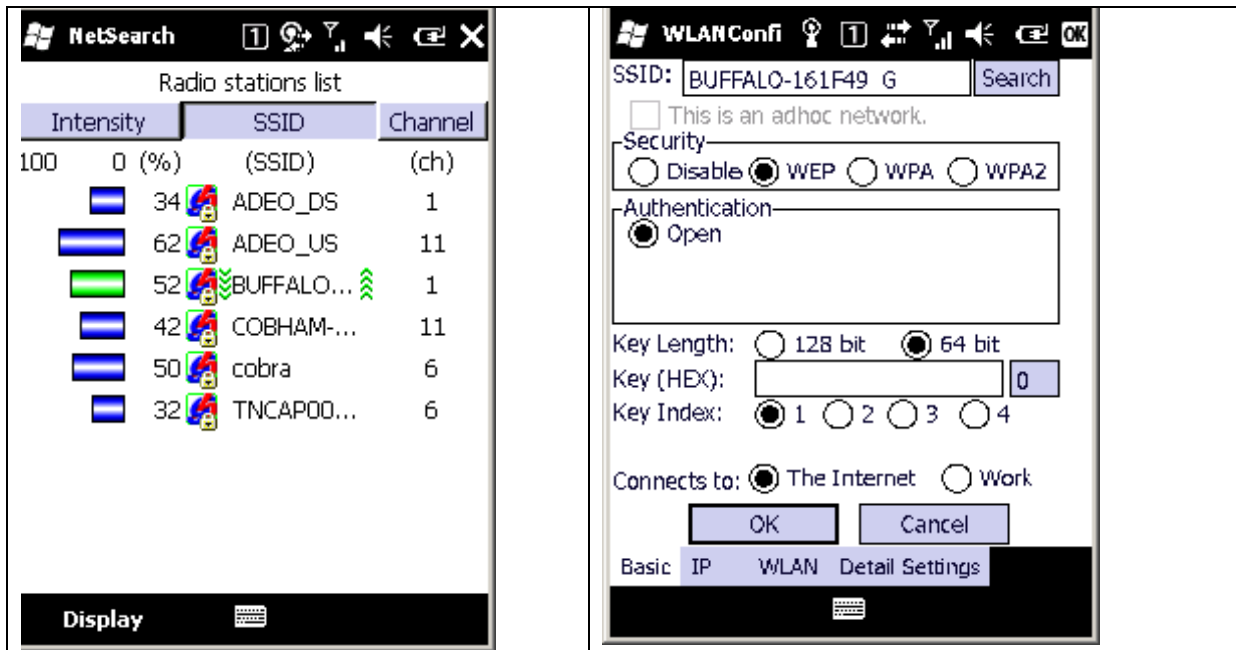
The content of this screen should look familiar in content to someone who has previously had experience of connecting devices to wireless networks:



Use the “Search” button to search for the “SSID” (access point name) you want to connect to.

e.g.

Select the required access point by double clicking on it and you will get returned to the previous screen which you will need to complete:



Select the appropriate security and authentication settings. You will need to ask your IT support personnel how to set these as well as ask them what the key or other settings you need to enter.



: When inputting key / password data you will need to select the input field with your stylus then display the onscreen keyboard by tapping on the keyboard icon at the bottom of the screen. This unfortunately obscures all the data that you are entering.

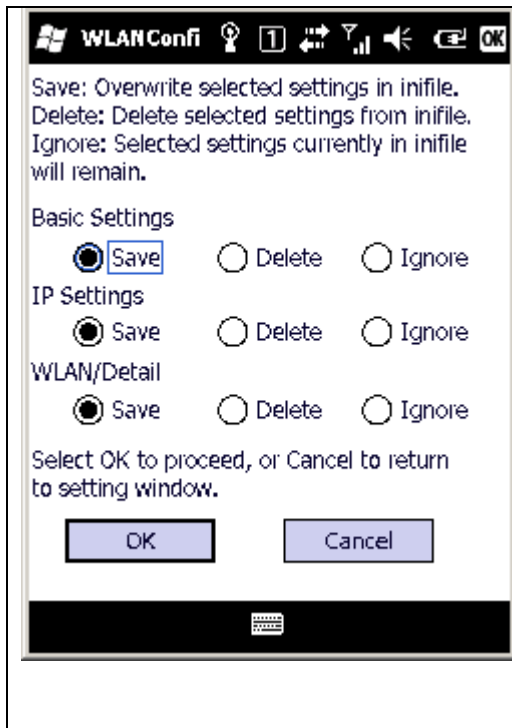
On the Microsoft dialogue it is possible to add a WEP key in normal alphabetic characters. Unfortunately using the CASIO dialogue you have to enter a WEP key as hexadecimal characters. You can convert a pass phrase to hexadecimal using the following web page <http://www.rapidtables.com/convert/number/ascii-to-hex.htm>

Note it would be more secure to do this conversion manually if you can use the <http://www.asciitable.com/> website instead where hexadecimal values are given in tabular columns of letters and numbers headed Hx.

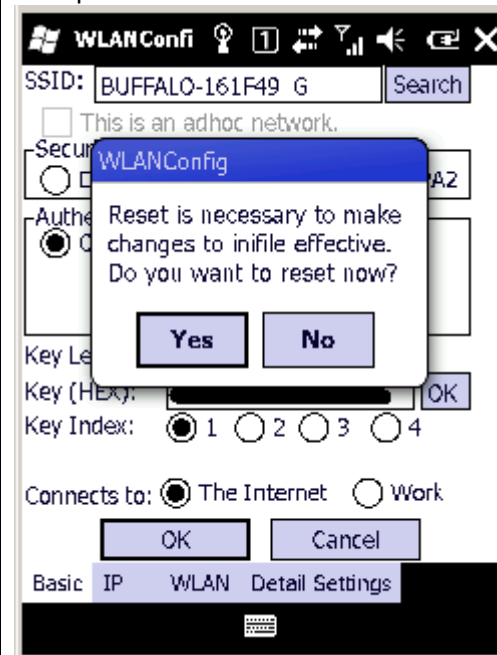
Ensure you connect to the internet using the “Connects to: The Internet” option. Once all the configuration data is correctly completed click Ok.

Click ok to proceed to the next screen.

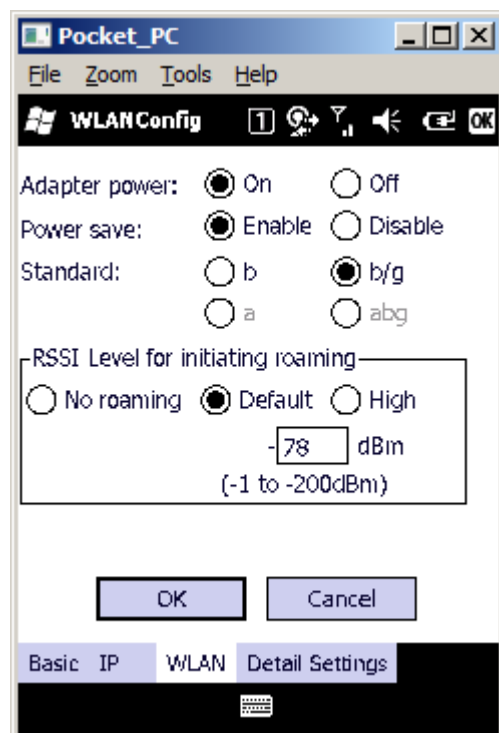
A warning message will be displayed. Rather



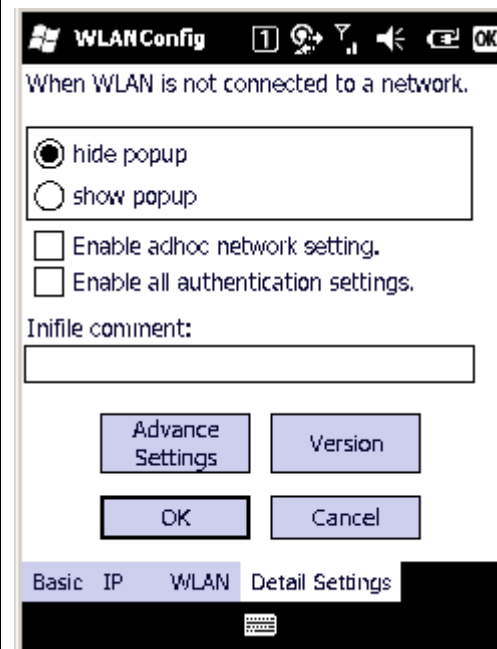
than proceed click No.



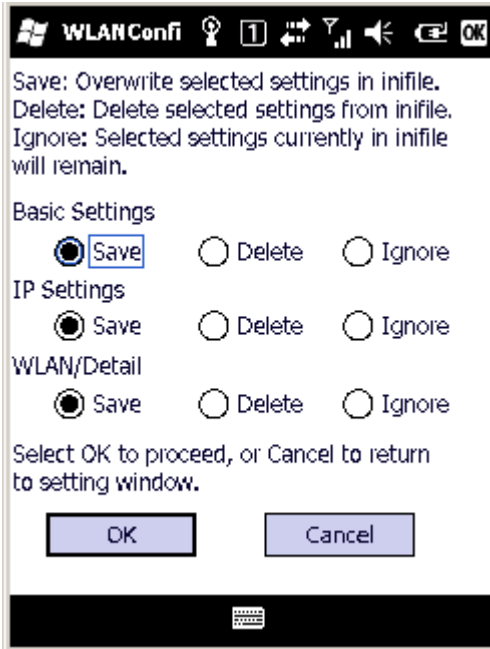
Ignore the WLAN tab



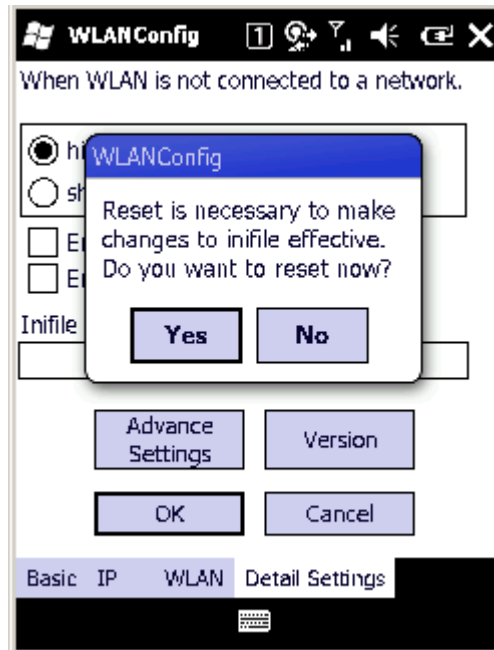
Select the details tab. A check the hide popup option and ensure the other settings are left unchecked:



Your changes will again display the save confirmation dialogue. When this dialogue displays click ok:



This time when the reset warning screen appears click yes to reset the unit:

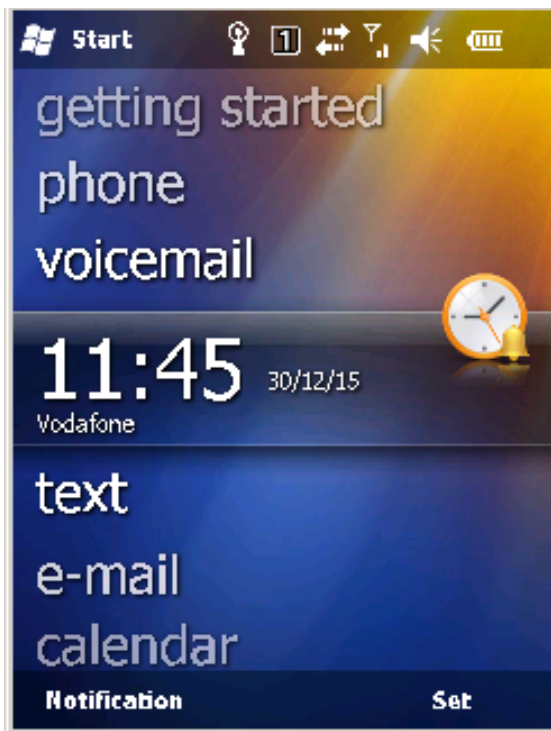


**NOTE**

Always use the CASIO WLAN Setting icon /screen instead of the Wireless Manager icon or the access to this Microsoft screen you can get by tapping on the top screen newtork icon and selecting wireless manager and then Menu Wifi Settings. The CASIO and Microsoft newtork configuration settings are not compatable and must not be used at the same time. See section "Removing a 'Microsoft' Wireless Manager Configuration".

## 4. Set Timezone and Datetime

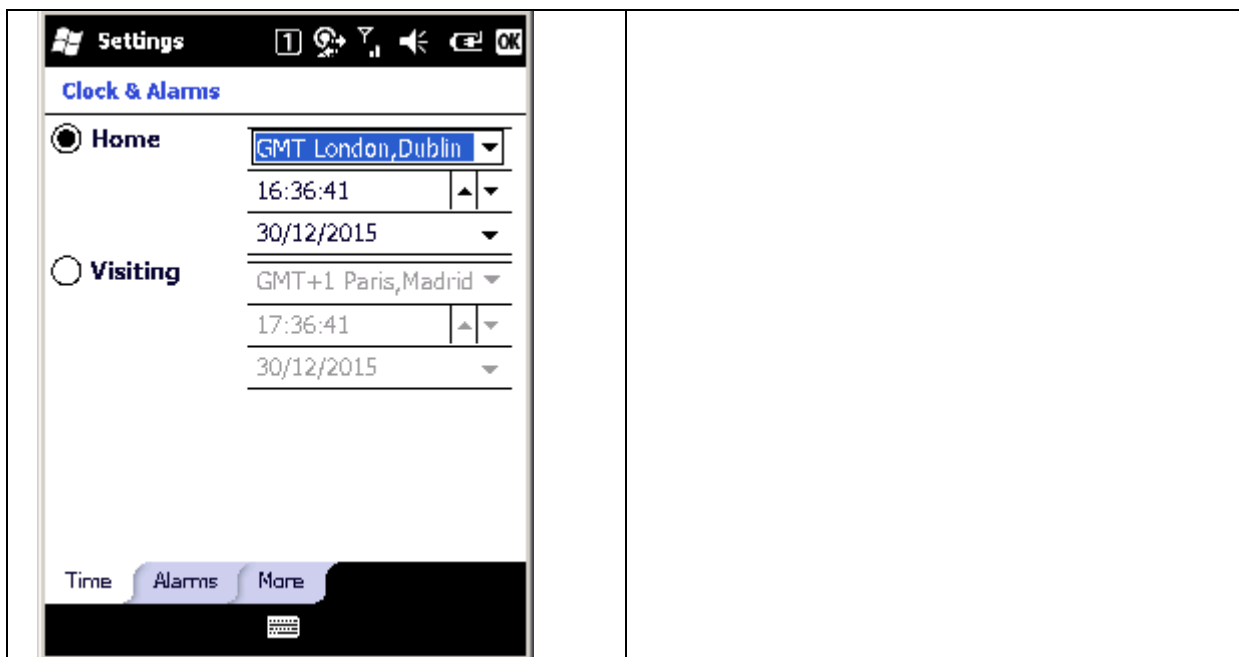
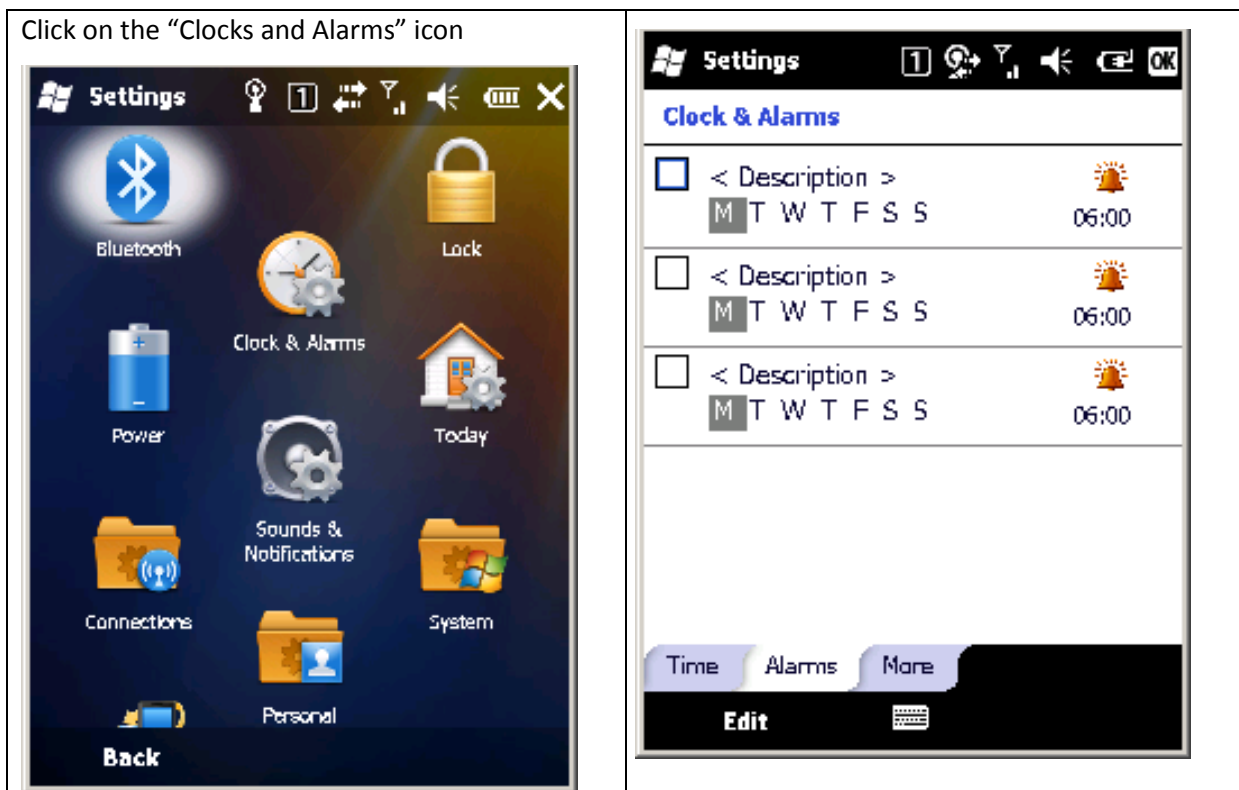
Click the Start Button on the top right hand side:



Select Settings by tapping on the settings icon that looks like a cog wheel:



Select the Time tab on the bottom left side of the screen:



On the Settings screen click on the Clocks and Alarms icon and select the Time tab. Change the time zone to GMT London, Dublin.

Set the time and date and confirm.

Restart the unit by using the reset 'button' on the reverse of the unit. Once re-booted, the time and data should be correct.

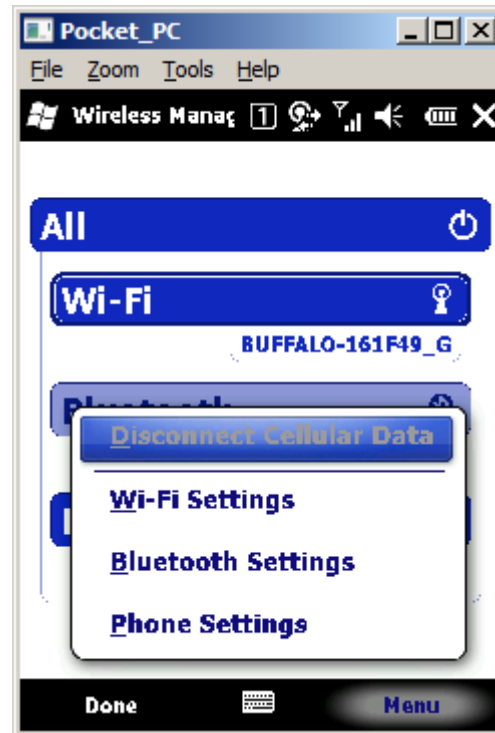


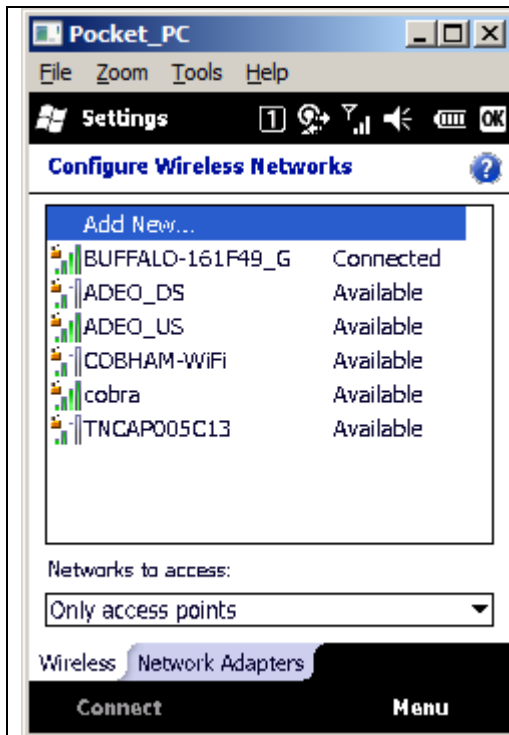
## 5. Removing a 'Microsoft' Wireless Manager Configuration

From the start screen click start, click Settings, click connections, click WLAN Power and ensure that this screen's check box is ticked to switch on WLAN Power. Ok out of the WLAN Power screen by clicking the top right. Click on the Wireless Manager icon:

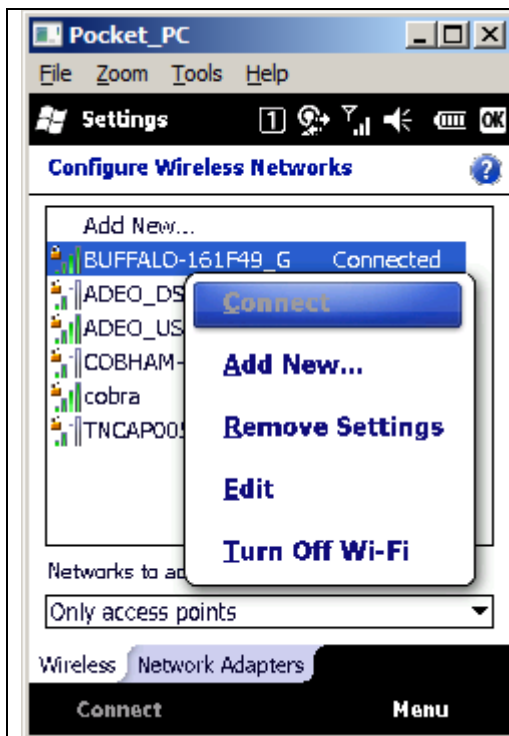


Click menu to display the popup menu shown below and then click on the "WI-FI settings" option:





Continuously pressing on the access point configurations that you need to remove will cause a pop up menu to appear that includes a “Remove Settings” option.



**NOTE**  
You will need to remove all the access point configurations even if they some are not connected.

Once you have removed all the Microsoft configured settings you will need to press the Reset button on the back of the unit. In testing this I believe WLAN Power needs to be left switched on for the CASIO style wireless configuration (Accessed by the WLAN Settings icon) to operate.

**NOTE** It is not ideal that once you start using the WLAN Settings option if you were to revisit the Microsoft style “Wireless Manager” screen you would still see a connection set which you could remove using the “Remove Settings” option.

## 6. SD Card Over The Air Updater Setup

Put the SD card into the unit on the left hand side.

The updater will first want to install a CAB file that contains error messages. You will be asked where to install this software. Just click install then ok. If you are using the over the air updater for the second time on the same unit it will ask you whether you want to uninstall the existing software before reinstalling it. If this happens just click Cancel. You will get a message that Installation of NETCFv35.Messages.EN.wm.cab was unsuccessful. Click OK at the top right.

After a short pause the over the air updater software will run.

The over the air updater will display an “Initialising” message then connecting attempt 1.

If a connection is made ok and software has been configured to be delivered to this handheld you will be asked if you want to install the new software. Ensure you are prompted to install the software for the correct customer and version. When prompted click yes to install the new software.

If the updater cannot get a connection it will try four times to get the connection before giving up. During this process you can choose to stop the updater at any time by clicking the Quit button.

The updater will display the device’s serial number at the bottom left hand side. This is a useful feature if the device’s serial number sticker is missing or incorrect (Serial numbers can sometimes be incorrect after a repair but this is usually fixed at ISYS before the unit is returned to a customer as each unit’s ability to communicate is tested by ISYS before it is despatched to a customer).

If you click yes to an update that gets offered then the updater will download the update, unzip it and run the update to install your new software on the unit. Each of these steps take a noticeable amount of time. If any of these steps are very quick then a problem has occurred.

The updater will exit.

The updater will now install any CASIO software patches. Currently the only patch we install is the printer patch.

Once the printer patch is installed (for the first time) you will be told that the unit must restart. Wait till the unit starts to restart then remove the SD Card NOT BEFORE. Click OK at the top right to close this successful installation screen.

If you are using the SD Card for the second time then when the printer patch tries to install you will

get an error message displayed “Update file version error”. I feel this is very misleading and is due to the software CASIO have produced. I would call this a bug. But we cannot fix this problem as it is not ISYS software. Click Ok to close this popup message. Click Ok at the top right to close this unsuccessful installation screen.

Reset the unit again. The unit will again run the over the air updater. This time press the Cancel button. The over the air updater will continue to offer you a new version up to the point that you have logged on successfully with the updated software. This feature ensure that the existence of a correctly installed version is only noted by the “update server” once the software has been successfully used.

Whatever software you have installed a short while after your software should load. You will be prompted to set the date time.